

Missouri State University
Department of Nursing
Professional Building Suite 300
Phone: (417) 836-5310
Toll free: (877)-728-0001
Nursing@Missouristate.edu

Spring 2016

BEARS that *Care*



O'Reilly Clinical Health Sciences Center Completed

The O'Reilly Clinical Health Sciences Center had its official dedication on Oct. 6, 2016, and students have enjoyed their first semester with the new facilities.

The center houses the Nursing, Nurse Anesthesia, Occupational Therapy, and Physician Assistant programs, as well as the newly relocated MSU Care clinic. In addition, the building offers students a variety of individual study areas, group study spaces, conference rooms, and an open-air atrium.

The building was largely made possible through the generous donation from the O'Reilly family: Charlie and Mary Beth O'Reilly, Larry O'Reilly, David O'Reilly, Rosalie Wooten, and the Charles H. (Chub) O'Reilly Trust, for which the building was named.

Inside This Issue

MSU Care Clinic	2
New Nursing Facilities	3
Advisement.....	4
New Staff	5
Graduate Highlight	5
SNO Corner.....	6
Calendar of Events.....	6

Special Points of Interest

- Look inside for a sneak peek behind the scenes of the O'Reilly Clinical Health Sciences Center!
- Meet the new faces of the MSU Department of Nursing!
- Find upcoming events!



Nursing.MissouriState
GraduateNursing.MissouriState
@MSUNursing

Inside The O'Reilly Clinical Health Sciences Center



Highlights of the O'Reilly Center

- Home of the MSU Care clinic, offering medical care to those in need.
- Expanded facilities for Nursing, Nurse Anesthesia, Occupational Therapy, and Physician Assistant programs.
- State-of-the-art learning environments to give students realistic, hands-on experience.

MSU Care Clinic

One of the most exciting additions to the O'Reilly Clinical Health Sciences Center is the relocation of the MSU Care clinic. MSU Care began as a collaboration between Missouri State University and the Kitchen Medical clinic in 2010. Since then, the Kitchen Medical Clinic has closed, and through a partnership with the Mercy Health System, the MSU Care clinic has become a part of our new facilities, opening in October of 2015.

The newly reopened clinic provides medical care to uninsured adults with limited or no income, offering non-emergency primary care and basic diagnostic services. The clinic is staffed by nurse practitioners on the Department of Nursing faculty, including Dr. Susan Berg, Kathryn Patterson, Alisha Jones, and Vanessa McConnell, in addition to area nurse practitioners Karen Young and Gaylene Chapman.

The clinic encourages cooperation between health disciplines, and allows students from many health programs, including undergraduate and graduate nursing, pre-medical, physician's assistant, dietetics, pre-professional, and health promotion students, to gain valuable experience. As services expand, the clinic will include experiences for audiology, physical therapy, and occupational therapy students as well.

For more information about the MSU Care clinic, please visit

<http://msucare.missouristate.edu/>



A Wealth of Resources for Students

The new facilities have allowed professors and students more room in both the skills and simulation labs. With the extra room, the simulation lab has expanded to become a realistic hospital setting with separate rooms for each of the high-fidelity mannequins used for student practice. Each of these highly realistic mannequins has its own control station where professors program and record simulations for students. The simulation lab can run six different simulations at once, compared to a maximum of two with the previous facilities. To make the setting as realistic as possible, students use mobile computers, medication dispensing units, and patient scanners, as they would in a hospital.

Each clinical course utilizes simulations, ranging from caring for a mental health patient to performing a wellness assessment on a newborn baby. In addition to allowing the ability to practice placement of IVs and catheters, the mannequins can be programmed or outfitted to have a variety of health concerns, such as heart murmurs, pneumonia, burns, and wounds so students can practice care and assessment of patients.

Faculty are working toward developing inter-professional simulations that involve students from other healthcare disciplines, much like how daily operations would run in a real hospital or clinic. This will include the involvement of nurse practitioner students in future simulations to give them the experience of management and decision making in a controlled setting.

Professor Carolyn Graves is the Director of the Simulation Lab. She works with faculty to develop simulations that meet the student's learning needs in the various graduate and undergraduate programs in nursing and in the College of Health and Human Services.

Behind the Scenes

- A wide range of realistic mannequins are available for student practice, including adult, geriatric, pediatric, neonatal, and obstetric mannequins.
- Several types of mannequins offer students a variety of experiences. The high-fidelity mannequins used in the simulation lab are able to react like a real person and allow students to practice patient care and emergency protocols in a controlled setting.
- Simulations with the high-fidelity mannequins are monitored by faculty, who are able to program many different situations to mimic real-life experiences.

Job Shadowing Tips From Your Advisors

- Don't forget about your job shadow! Spring break can be a great time to get some experience!
- 8 hours is only the minimum. By shadowing more often, you will have a better idea of a day in the life of a nurse.
- Not sure what you would like to do? Try shadowing nurses from several different backgrounds!
- To be accepted for your application, job shadows must be with an RN in a hospital setting.
- Be sure to print the job shadow documentation form from the online application to take with you!
- Have any questions? Ask your advisor! We love to hear from you!
- For a complete list of application requirements, refer to the current BSN application at <http://www.missouristate.edu/nursing/undergraduate/AdmissionReqs.htm>

Meet Your Pre-Nursing Advising Team!

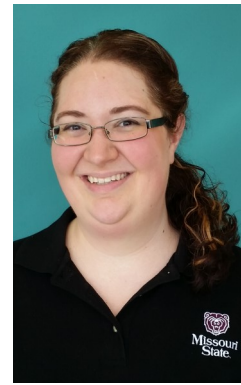


Recy Moore, BS (Full Time)

After several years as a Missouri State academic advisor for nontraditional students, Recy moved to the pre-nursing full-time advisor position. She earned her undergraduate degree in Technology with an emphasis in broadcasting. While she greatly enjoyed her earlier careers in her degree field, advising students seeking their own degree path is her passion.

A native of Texas, Recy and husband, Brent, moved to Springfield in the late 1990s. From that point on, they became ardent BEARS fans! Their daughter, Meagan, is a sophomore at MSU. Twin sons, Daniel and Collin, are sophomores at Kickapoo High School.

Helping students follow their passion and find their place at Missouri State is her greatest reward. Her second greatest reward is when students bring chocolate to their advising appointments!



Cynthia Hagenhoff, DVM (Part Time)

Cynthia joined the department as the part-time pre-nursing advisor at the beginning of the fall 2015 semester. She is a veterinarian and is back at MSU completing an additional master's degree in Health Promotion and Wellness Management.

After working with a non-profit clinic, she was troubled by the rise in burnout and health-related problems in the healthcare field, for both human and animal caretakers. She plans to help develop health and stress management programs for pre-professional students, giving them resources they can use throughout their careers.

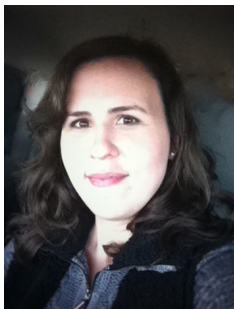
Cynthia has enjoyed getting to know all of the pre-nursing students and loves helping them reach their goals!

Get a Head Start on Summer!

Students who are thinking of taking summer classes should be sure to consult with their advisor before registering, especially if planning on taking classes at another campus. Some classes may not transfer to MSU as the courses required for the program, particularly the higher level science classes, such as nutrition, anatomy, and physiology. These courses are recommended to be taken at MSU, as they are widely accepted by many nursing programs and are preferred for application. For any classes taken outside of MSU, be sure to check the university's transfer equivalency page at

<http://www.missouristate.edu/admissions/howcredittransfers.htm>

New Faces in the Department



Amber McBride, BA

Amber McBride is the Academic Administrative Assistant for the DNP and MSN-NE programs. She received her BA from Missouri State University and will start working on her master's degree this summer here at MSU!

Amber looks forward to assisting you in accomplishing your goals here at Missouri State University.



Alisha Jones, MSN, APRN, FNP-BC

Alisha Jones joins the Department of Nursing as a clinical assistant professor. She graduated from the MSU Family Nurse Practitioner (FNP) Program in 2010, and has a background in rural primary family care.

Alicia also joins the faculty on staff as a nurse practitioner at the MSU Care clinic.



Melissa Penkalski, DNP, APRN, CPNP-PC, AE-C

Dr. Melissa R. Penkalski is an assistant professor and pediatric nurse practitioner. Dr. Penkalski graduated from the first Doctor of Nursing (DNP) Program at MSU in August 2014. She is very passionate about all things pediatric, but especially those pertaining to asthma and immunizations.

Dr. Penkalski has been married to Jim for 15 years and has 4 children, Amanda-14, Katelyn-11, Russell-7, and Tessa-1.

Graduate Program Highlight

Doctor of Nursing Practice

According to Forbes Magazine (January 21, 2016), more than half of the nation's family physicians say they include nurse practitioners on their care teams. With the growing need for nurse practitioners, Missouri State University began offering two degree options to meet the needs of registered nurses with varying educational backgrounds seeking this specialized degree:

BSN to Doctor of Nursing Practice

Post-Masters Doctor of Nursing Practice

Both programs offer a combination of online and hybrid courses, with schedules developed for students considering course work on a full-time or part-time basis.

In May of this year, the Department of Nursing will recognize the first graduating class of the BSN to Doctor of Nursing Practice program.

To find more information about MSU graduate nursing programs, please visit <http://www.missouristate.edu/nursing/>



New 2016 Officers:

President: Emily Evans

Vice President: Kylee Thomas

Secretary: Dusti Turner

Treasurer: Carina Patton

Social Chairs: Lauren Daniels
and Faith Orie-Okpewho

For more information about
meetings, contact SNO
President Emily Evans at
Evans333@live.missouristate.edu



Student Nurse Organization (SNO) Corner

Spring Semester Meeting Dates

Regular meetings will be held in room
0100 of the O'Reilly Clinical Health
Sciences Center from 11:30-12:00

March 2

April 6

May 4

Pre-Nursing meetings will be held in
room 0103 of the Professional
Building at 7:00 pm

March 1

April 5

Pre-Nursing students are always
welcome at regular meetings as well!

Editors:

Cynthia Hagenhoff, DVM
Recy Moore, BS
Gay Carson, MSED

Photo Credits:

Cynthia Hagenhoff, pp1, 3, 4, 5
Gay Carson, p2
Recy Moore, p4
Amber McBride, p5
MSU Photographic Services, p5
Tamicka Monson, p5
SNO, p6

Special thanks to Carolyn Graves,
MSN, RN and Susan Berg, DNP,
APRN, FNP-BC for information
about the O'Reilly Clinical Health
Sciences Center and DNP Program



Calendar of Events

January 18: Martin Luther King Jr. Holiday (No Classes, Offices Closed)

January 31: BSN Applications Due at 5pm

February 12: Lunch With an Advisor

February 15: President's Day Holiday (No Classes, Offices Closed)

March 7-13: Spring Break (No Classes, Offices Open)

March 18: Nurse for a Day Workshop

March 24-27: Spring Holiday (No Classes, Offices Closed 25th-27th)

April 9: Spring Showcase

April 29: Nurse for a Day Workshop

May 6: Study Day (No Classes)

May 6-12: National Nurses Week

May 13: Spring Commencement

Congratulations Class of 2016!!!